

## ANTARES CHARTS CORRECTIONS AND CAUTIONS 2021

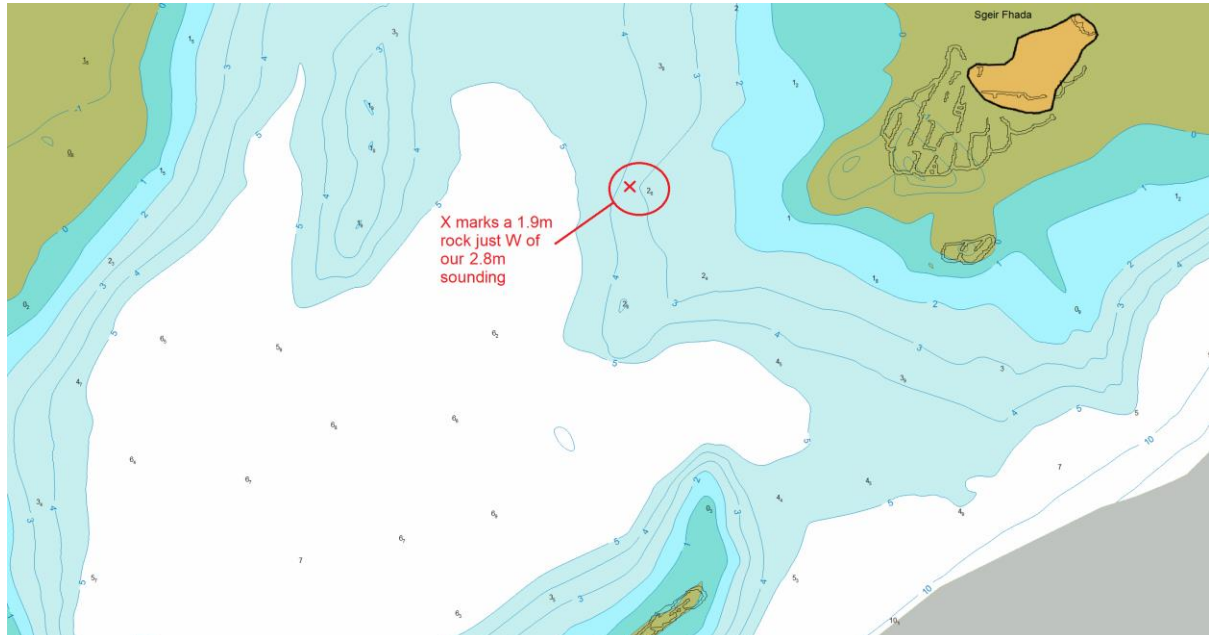
Our current set of charts is **Antares Charts 2020** (there will be no 2021 set): the following **Corrections** and **Cautions** relate to issues identified after its publication. Corrections will be reflected in our next set of charts, expected to be published in January 2022. All Corrections and Cautions are subject to the Conditions posted on this website.

**NB** The 2018 and all earlier chart sets have been superseded by the 2020 set (there was no 2019 set and will be no 2021 set) and we strongly recommend that only the current set should be used.

**NB** Hydrographic surveying and cartography are not precise sciences. There will be errors and misleading representations on our charts as well as those published by others. Please read the sections on our website: 'Making the charts', 'Using the charts' and the 'Conditions'. Take great care at all times but especially if away from the routes described by the sailing directions.

### ***Issues relating to charts in the current 2020 set:***

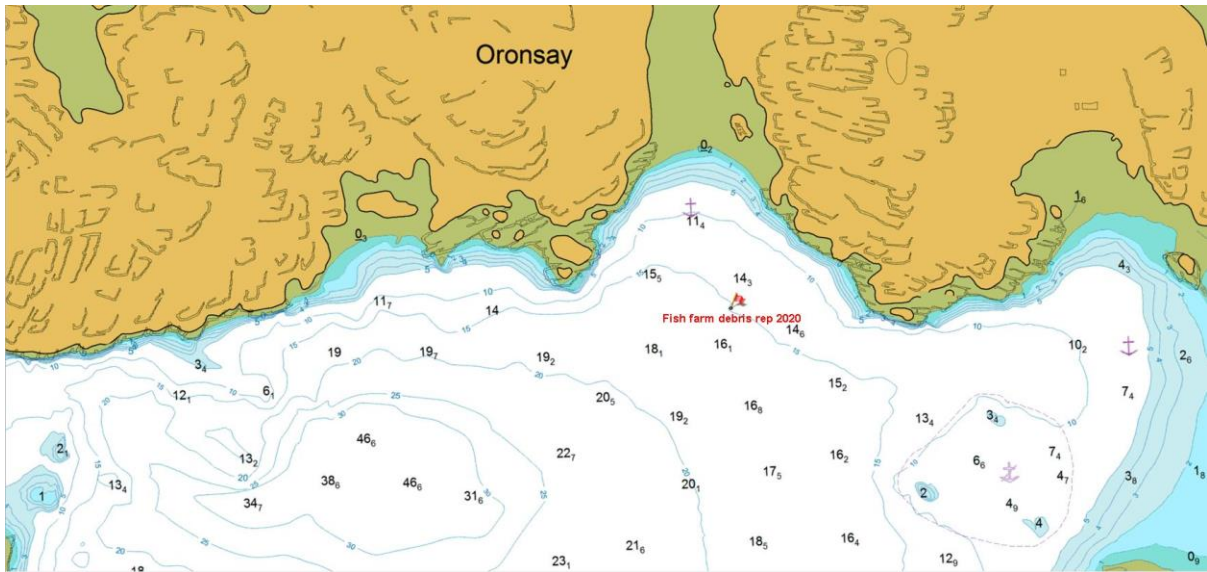
**April 2020 and June 2021: Correction to a correction!: Chart 5724A, edition 2, Lochcarron Bay:** a professional survey in early 2020 reported a 1.9m rock in an area we show as over 3m and close to a 2.8m sounding. The position is 57deg 23.78N, 5deg 28.95W. See extract from our chart, below. We reported this as a correction in April 2020. In June 2021 we re-surveyed the area to find no trace of the reported rock. The UKHO has been notified.



**August 2020: New hazard: Loch Drumbuie:** an Antares Charts subscriber recently reported the following serious underwater hazard: a heavy pile of fish farm debris comprising nets, steel poles and ropes - all well enough secured to the bottom to hold our vessel on a vertical rode against 30knots! Location, roughly on the 15m

## ANTARES CHARTS CORRECTIONS AND CAUTIONS 2021

contour to the north of the Loch: 56° 39.428' N 5° 55.733' W. For convenience this position is shown on the extract of our chart:



**Please note** that we do not expect to be able to detect obstructions of this sort – we can only mark them when they are reported to us. And we seldom show floating fishing gear as it tends to be moved quite frequently

**September 2020: Caution: Loch Ailort Entrance Channels:** we understand that there is now a mussel farm to the NE of En Bairneach that blocks the E end of the channel between En Bairneach and En nan Trom. It is therefore necessary to pass S of En Bairneach when entering or leaving the inner loch.

**June 2021: Correction: Chart 5726A, edition 2: Castle Bay, Loch Dunvegan:** in the northern part of the bay there is a green drying area with a double black line around its perimeter (what the Ordnance Survey describes as 'Ornament'!!!). This has a drying 0.4m depth beside it. This was a computer generated depth and, while it is correct, it is misleading as the centre of the rock, that we weren't able to pass over, is estimated to be drying 3.5m. **NB** OS 'Ornament' of this sort should **always** be avoided.

### ***Issues arising from 2021 surveys and reports, to be published as new or revised charts in 2022:***

**May 2021: Caution: Loch Risay, East Loch Roag, West Lewis:** UKHO chart 2515 shows a 6.4m sounding in the entrance to the inner anchorage in Loch Risay. We found a rock of 1.2m exactly under this 6.4m sounding. Our new chart will be published next year but for now the only safe way of entering or leaving is to ensure enough height of tide to be able to pass over the rock, remembering that high atmospheric pressure can reduce the water level by 30cm or more.

**May 2021: Caution: North entrance to Kirkibost Harbour, East Loch Roag, West Lewis:** the rocky area around the perch in the channel extends significantly further to

## ANTARES CHARTS    CORRECTIONS AND CAUTIONS 2021

the N than indicated on UKHO chart 2515 or in the CCC Imray Sailing Directions: there is a 1m ledge 50m NW of the perch, roughly half way between the E and W HW lines. To enter the harbour it is necessary to steer a course due S, first passing 50m off the perch on the Bernera shore (W shore) and then passing 50m to the W of the perch in the channel, a little further on. The Bernera shore shelves steadily, without unpredictable hazards.

**June 2021: Caution: Loch Salainn, Enard Bay.** There is a large rocky area with least depth of 1.1m adjacent to the prominent drying rock and partly obstructing the channel into the loch. There is also a rock with least depth of 2.2m exactly where yachts would be likely to anchor. An image of a draft chart is reproduced below.

**June 2021: Caution: Minor Summer Isles.** We have also sent H notices to the UKHO in connection with three rocks in anchorages off Priest Island, Carn Skerries (west side) and in the channel to the east of Carn Deas. These have least depths of 3.9m, 2.4m and 2.6m respectively, are not in the obvious anchoring spots and so are unlikely to trouble most yachts, very few of whom visit these remote anchorages. Full charts will be published in early 2022.

**July 2021: Caution: Upper Loch Nevis.** We have investigated the head of Loch Nevis and will be publishing charts of the South Head and 'Pier Bay' in 2022. The CCC Imray Sailing Directions suggest anchoring in either the N or S branches at the Head. The N branch looks very suitable—we have not done a detailed survey but it appears to have a large flat area but at 15m (+ tide) and not the lesser depths implied by other charts. The S head has very steeply shelving sides—in places 1m down for 2.5m horizontally! - and we suggest you should not use it other than in very settled conditions.

