

ANTARES CHARTS CORRECTIONS AND CAUTIONS 2020

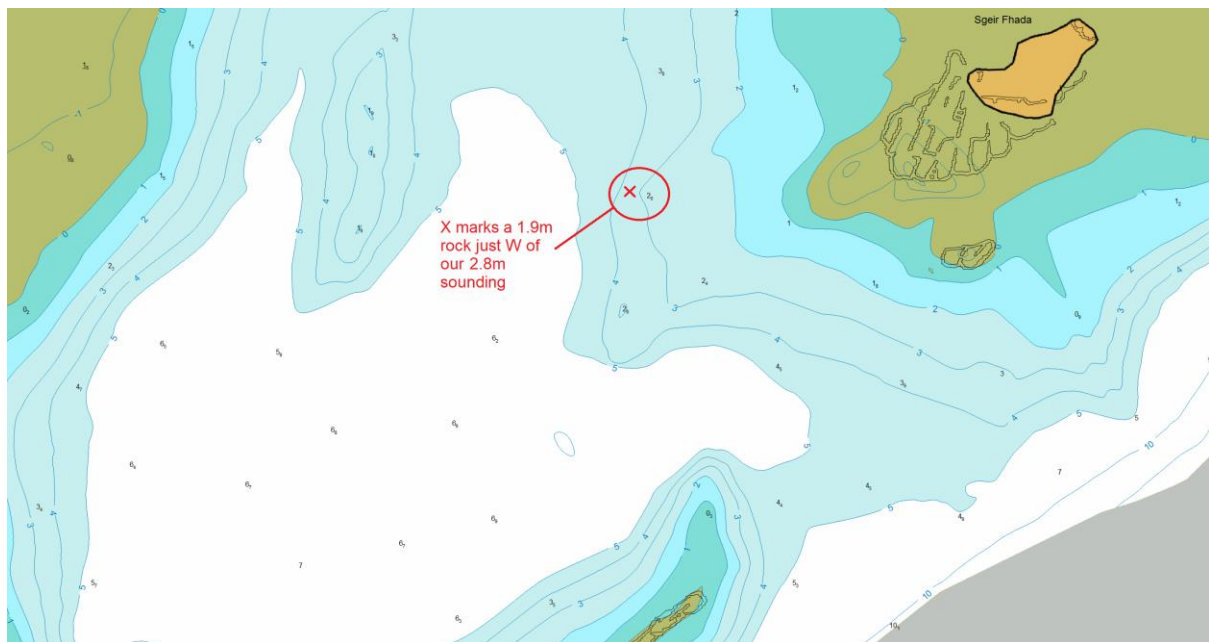
Our current set of charts is **Antares Charts 2020**: the following **Corrections** and **Cautions** relate to issues identified after its publication. Corrections will be reflected in our next set of charts, expected to be published in January 2021. All Corrections and Cautions are subject to the Conditions posted on this website.

NB The 2018 and all earlier chart sets have been superseded by the 2020 set (there was no 2019 set) and we strongly recommend that only the current set should be used.

NB Hydrographic surveying and cartography are not precise sciences. There will be errors and misleading representations on our charts as well as those published by others. Please read the sections on our website: 'Making the charts', 'Using the charts' and the 'Conditions'. Take great care at all times but especially if away from the routes described by the sailing directions.

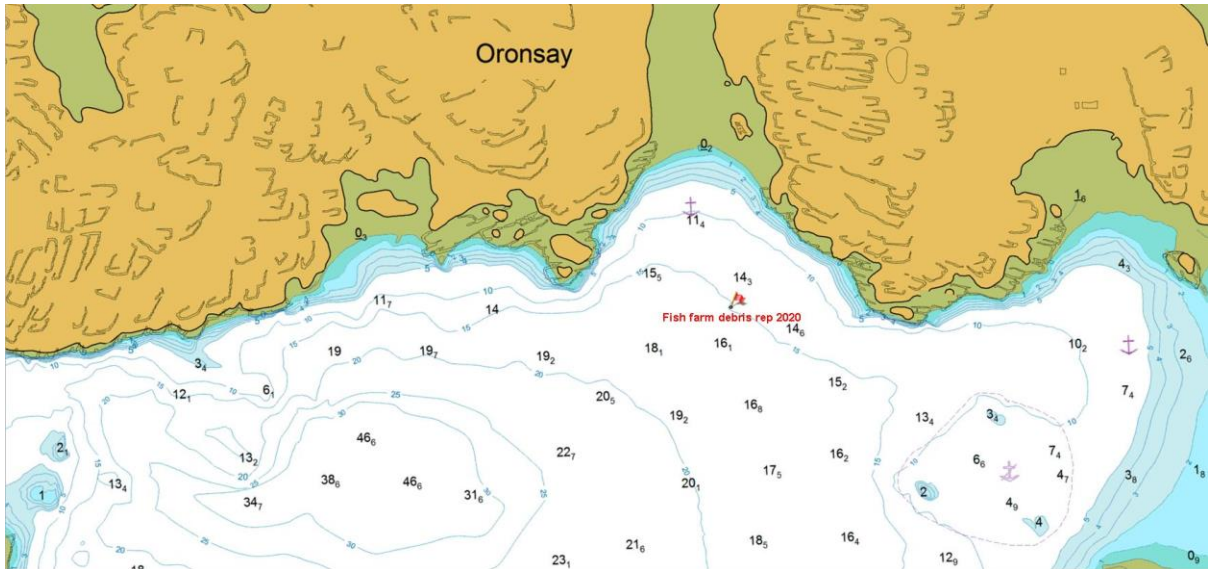
Issues relating to charts in the current 2020 set:

April 2020: Correction: Lochcarron: a recent professional survey has revealed a 1.9m rock in an area we show as over 3m and close to a 2.8m sounding. The position is 57deg 23.78N, 5deg 28.95W. See extract from our chart, below.



August 2020: New hazard: Loch Drumbuie: an Antares Charts subscriber recently reported the following serious underwater hazard: a heavy pile of fish farm debris comprising nets, steel poles and ropes - all well enough secured to the bottom to hold our vessel on a vertical rode against 30knots! Location, roughly on the 15m contour to the north of the Loch: 56° 39.428' N 5° 55.733' W. For convenience this position is shown on the extract of our chart:

ANTARES CHARTS CORRECTIONS AND CAUTIONS 2020



Please note that we do not expect to be able to detect obstructions of this sort – we can only mark them when they are reported to us. And we seldom show floating fishing gear as it tends to be moved quite frequently

September 2020: Caution: Loch Ailort Entrance Channels: we understand that there is now a mussel farm to the NE of En Bairneach that blocks the E end of the channel between En Bairneach and En nan Trom. It is therefore necessary to pass S of En Bairneach when entering or leaving the inner loch.

Cautions relating to areas we have surveyed but not yet published a chart: We will not be conducting any surveys during 2020